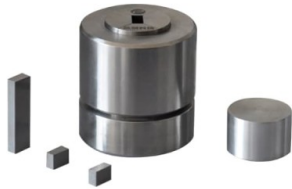


Assemble Square Lab Press Mold For Laboratory Applications

Item Number: PMAS



Introduction

Achieve perfect sample preparation with Assemble Square Lab Press Mold. Quick disassembly eliminates sample deformation. Perfect for battery, cement, ceramics, and more. Customizable sizes available.

[Learn More](#)

Model	PMAS-A	PMAS-B	PMAS-C	PMAS-D	PMAS-E
Material	Cr12MoV				
Indenter hardness	HRC60-HRC62				
Sample size	3*3[4*4[5*5[6*6[8*8[10*10] mm (M)	12*12[15*15[18*18[20*20mm(N)	30*30[40*40 mm (M)	50*50[60*60 mm(M)	70*70[80*80 mm (M)
Cavity depth	30mm (N)	40 mm (N)	50 mm (N)	55 mm (N)	60 mm (N)
External dimensions	Φ53*120mm(L*H)	Φ73*133mm(L*H)	Φ95*133mm[Φ115*133mm(L*H)	Φ127*150mm[Φ153*150mm (L*H)	Φ180*180mm[Φ200*180mm(L*H)
Weight(Kg)	1.2Kg	3.6Kg	7Kg[14Kg	20Kg[30Kg	40Kg[50Kg

Other sizes can be customized