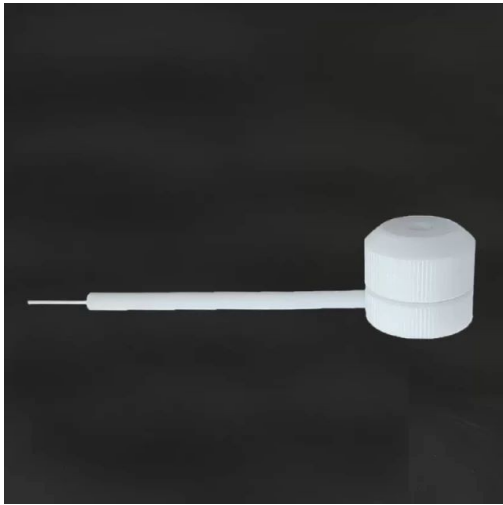


# Sample Support Body For Electrochemical Tests

Item Number: ELES



## Introduction

Improve your electrochemical tests with our Sample Support Body. High-quality and reliable for accurate results. Upgrade your research today.

[Learn More](#)

Reaction area	1cm <sup>2</sup> (customizable)
Applicable sample size	circular diameter > 15mm square side length > 15mm
Applicable sample thickness	3mm ~ 5mm (can be customized)
Conductive form	gold-plated copper needle
Overall material	PTFE
Dimensions	rod length 6*80mm