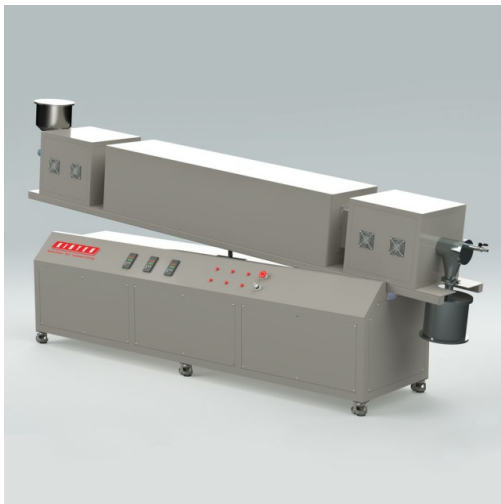


# Vacuum Sealed Continuous Working Rotary Tube Furnace

Item Number: KT-CRTF



## Introduction

Experience efficient material processing with our vacuum-sealed rotary tube furnace. Perfect for experiments or industrial production, equipped with optional features for controlled feeding and optimized results. Order now.

[Learn More](#)

Furnace model	KT-CRTF12	KT-CRTF14	KT-CRTF16
Max. temperature	1200°C	1400°C	1600°C
Constant work temperature	1100°C	1300°C	1500°C
Heating rate	0-20°C/min	0-10°C/min	
Furnace tube material	Quartz/Metal alloys	Al <sub>2</sub> O <sub>3</sub> /Si <sub>3</sub> N <sub>4</sub>	
Rotary speed	0-20rpm		
Tilting angle	-5-30 degree		
Furnace tube diameter	30 / 40 / 60 / 80 / 100 / 120 / 150 / 230 / 280 mm		
Single heating zone length	300 / 450 / 600 / 800mm		
Vacuum sealing solution	SS 304 flange with O ring		
Chamber material	Japan alumina fiber		
Heating element	Cr2Al2Mo2 wire coil	SiC	MoSi2
Temperature sensor	K type	S type	B type
Temperature controller	Digital PID controller/Touch screen PID controller		
Temperature control accuracy	±1°C		
Electric power supply	AC110-220V,50/60HZ		
Different tube material and size and heating zone length can be customized			