



KINTEK SOLUTION

Electric Rotary Kiln Catalog

Contact us for more catalogs of [Sample Preparation](#), [Thermal Equipment](#), [Lab Consumables & Materials](#), [Bio-Chem Equipment](#), etc...

KINTEK SOLUTION

COMPANY PROFILE

>>> About Us

Kintek Solution Ltd is one technology orientated organization, team members are devoted to probing the most efficient and reliable technology and innovations in the scientific researching equipment, fields like biochemical reacting, new materials researching, heat treatment, vacuum creating, refrigerating, as well as pharmaceutical and petroleum extracting equipment.

In the past 20 years, we earned rich experiences in this researching equipment field, we are capable to supply both the equipment and solution according to customer's needs and realities, we have also developed lots of customer tailored equipment according to a specific working purpose, and we have lots of successful projects in many universities and institutes from different countries, like Asia, Europe, North and South America, Australia and New Zealand, Middle East, and Africa.

Profession, quick response, hard working, and sincerity is a remarkable label of our team members working attitude, which earn us a sound reputation among our clients.

We are here and ready to service our clients from different countries and regions, and share the most efficient and reliable technology together!



Electric Activated Carbon Regeneration Furnace

Item Number: KT-CRF



Introduction

Revitalize your activated carbon with KinTek's Electric Regeneration Furnace. Achieve efficient and cost-effective regeneration with our highly automated rotary kiln and intelligent thermal controller.

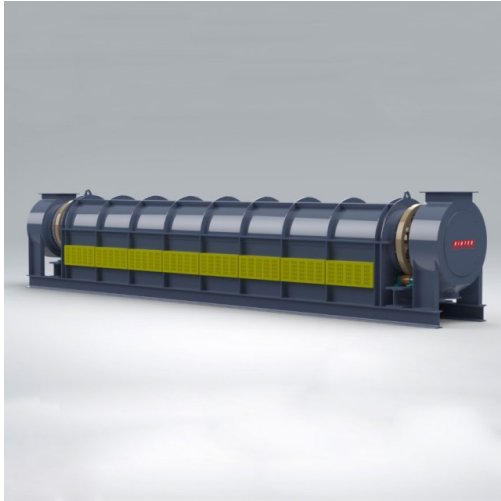
[Learn More](#)

Constant work temperature	
Rotary drum speed	0-5rpm
Rotary drum angle	0-6 degree
Chamber insulation material	Polycrystalline ceramic fiber
Temperature controller	Touch screen PID controller
Heating element	Silicon Carbide (SiC)
Temperature sensor	Armed K type thermal couple
Electric power supply	AC220-440V,50/60HZ

Model	Capacity (kg/h)	Rated power (kw)	Dimension (m)
KT-CRF60	60	63	7.0*1.6*2.2
KT-CRF100	100	103	7.0*1.6*2.2
KT-CRF200	200	205.5	8.0*1.8*2.2
KT-CRF300	300	305.5	8.0*1.8*2.2
KT-CRF500	500	507.5	9.0*2.0*2.2
KT-CRF800	800	811	10.0*2.2*2.6
KT-CRF100	1000	1011	11.0*2.2*2.6

Electric Rotary Kiln Pyrolysis Furnace Plant Pyrolysis Machine Electric Rotary Calciner

Item Number: KT-RKTF



Introduction

Electric rotary kiln - precisely controlled, it's ideal for calcination and drying of materials like lithium cobalate, rare earths, and non-ferrous metals.

[Learn More](#)

Model	KT-RKTF60	KT-RKTF80	KT-RKTF100	KT-RKTF120
Tube diameter	0.6m	0.8m	1m	1.2m
Tube length	7m	9m	10m	12m
Tube material	Nickel based alloy			
Heating zones	4 independent hot zones			
Work temperature	< 1100°C			
Rotary drum angle	0-3 degree			
Insulation material	Polycrystalline ceramic fiber			
Temperature controller	Touch screen PID controller with PLC			
Heating element	Silicon Carbide (SiC)			
Temperature sensor	Armed K type thermal couple			
Electric power supply	AC220-440V,50/60HZ			

Continuous Working Electric Heating Pyrolysis Furnace Plant

Item Number: KT-RFTF



Introduction

Efficiently calcine and dry bulk powder and lump fluid materials with an electric heating rotary furnace. Ideal for processing lithium ion battery materials and more.

[Learn More](#)

Model	Furnace size	Temperature	Heat zones	Power
KT-RFTF2020	Φ200×2000mm	950°C	3	30kw
KT-RFTF3030	Φ300×3000mm	950°C	6	54kw
KT-RFTF4050	Φ400×5000mm	950°C	6	96kw
KT-RFTF5060	Φ500×6000mm	950°C	6	168kw
KT-RFTF6080	Φ600×8000mm	950°C	9	234kw
KT-RFTF8090	Φ800×9000mm	950°C	9	342kw
KT-RFTF1211	Φ1200×11000	950°C	9	648kw

Rotary Biomass Pyrolysis Furnace Plant

Item Number: RBPF



Introduction

Learn about Rotary Biomass Pyrolysis Furnaces & how they decompose organic material at high temps without oxygen. Use for biofuels, waste processing, chemicals & more.

[Learn More](#)



Kintek Solution

Head Quarter: No.89 Science Avenue, High-Tech Zone,
Zhengzhou, China

Hongkong Office: 300 Lockhart Road, Wan Chai,
Hongkong

Canada Office: Boulevard Graham, Mont-Royal, QC, H3P
2C7, Canada

