



KINTEK SOLUTION

Fine Ceramics Catalog

Contact us for more catalogs of [Sample Preparation](#), [Thermal Equipment](#), [Lab Consumables & Materials](#), [Bio-Chem Equipment](#), etc.

KINTEK SOLUTION

COMPANY PROFILE

>>> About Us

Company Profile

Kintek Solution Ltd is one technology orientated organization, team members are devoted to probing the most efficient and reliable technology and innovations in the scientific researching equipment, fields like biochemical reacting, new materials researching, heat treatment, vacuum creating, refrigerating, as well as pharmaceutical and petroleum extracting equipment.

Products & Services

Kintek Solution Ltd is headquartered in Zhengzhou, the capital city of Henan Province, China, and its core business includes the manufacture, distribution and sale of all types of scientific research equipment and laboratory consumables. The wide range of products and services covers the following main areas:

- **Sample Preparation Equipment:** We provide high-performance sample preparation equipment such as tablet presses, ball mills, vibrating sieves and tablet punching machines, which are capable of meeting a wide range of sample preparation needs and ensuring high quality experimental data and research results.
- **Thermal Equipment:** Our thermal equipment includes tube furnaces, sintering furnaces, vacuum furnaces, atmosphere furnaces, graphite furnaces, dental furnaces, rotary furnaces, and high-temperature furnaces (e.g., MPCVD, CVD, PECVD, electric rotary kilns). These facilities excel in high-temperature processing and materials synthesis, meeting a wide range of needs from basic research to industrial production.
- **Biochemical equipment:** We offer a wide range of biochemical laboratory equipment, including rotary evaporators, vacuum pumps, cold trap chillers,

heating circulators, reactors, short-range distillation equipment, sterilization equipment, and homogenizers. These equipments are widely used in the fields of chemical reaction, biological processing and pharmaceutical manufacturing.

- **Laboratory Consumables:** We supply a wide range of laboratory consumables such as fine ceramic products, electrochemical consumables, PTFE material products, high purity materials, battery materials, chemical vapor deposition materials, optical materials, thin film deposition components and glass materials. These consumables provide the necessary support for laboratories to ensure the smooth running of experimental processes.

Technological Advantages

Kintek Solution Ltd has significant technological strengths in the field of scientific research equipment and technical solutions, which enable us to stand out in a competitive marketplace and support our customers with cutting-edge technology. The following are our key technological strengths:

Advanced R&D capabilities

- **Technological Innovation:** Our R&D team is committed to exploring and developing the latest technologies to keep our equipment at the forefront of the industry through continuous technological innovation.
- **Customized solutions:** Based on the specific needs of our customers, we are able to develop and provide customized equipment to meet specific research requirements and application scenarios.
- **Cooperative R&D:** We cooperate with leading research institutes and higher education institutions around the world to carry out R&D projects on cutting-edge technologies to ensure that our technologies are always at the forefront of the industry.

High-performance equipment

- **Precision design:** Our equipment adopts advanced design concepts to ensure high precision, reliability and performance to meet the stringent requirements of scientific research and industrial applications.
- **Advanced materials:** We use high-quality materials and components to improve the durability and stability of our equipment, extend its service life and reduce maintenance costs.

Strict quality control

- Standardized production: All equipment is manufactured in accordance with international quality standards, and each production step is strictly controlled to ensure product consistency and reliability.
- Comprehensive testing: Comprehensive performance testing and quality inspection are carried out before the equipment is delivered to ensure that it meets the customer's technical specifications and operational requirements.

Comprehensive technical support

- Technical Service: Provide comprehensive technical support and after-sales service, including equipment installation, commissioning, training and maintenance, to ensure that customers can use our products efficiently.
- Rapid Response: We have established a rapid response mechanism, which can promptly solve the problems encountered by customers in the process of use and reduce equipment downtime.

Innovative technology integration

- System Integration: We integrate advanced control systems and automation technologies into our equipment to improve operational efficiency and data accuracy, and streamline operational processes.

Through these technological advantages, Kintek Solution Ltd is able to continue to provide our customers with innovative, efficient and reliable scientific research equipment and solutions to promote the continuous progress of scientific research and industrial applications.

Market position and customers

Kintek Solution Ltd is positioned in the market as a leading global provider of high-tech research equipment and solutions, specializing in biochemical reactions, new materials research, heat treatment, vacuum manufacturing, refrigeration, as well as pharmaceuticals and oil extraction. We are committed to brand leadership in research equipment by providing innovative technology and high quality equipment to meet the needs of research organizations and industrial companies in complex research and production processes.

Core Market Positioning:

- **Specialization:** We focus on high technology and scientific research, providing advanced equipment and solutions for specialized research institutes, laboratories and industrial applications.
- **High-end customers:** Our main customers include world-renowned universities, research institutes and various industrial enterprises, which usually have high requirements for equipment performance and technology.
- **Technological Innovation:** We are committed to technological innovation and customized solutions to ensure that our customers receive cutting-edge technical support to meet the ever-changing needs and challenges in the market.

Market Customer Groups:

- **Research Institutes and Universities:** including the world's leading research institutes and institutions of higher learning, who require high-performance research equipment and technical support for basic research, applied research and technology development.
- **Industrial companies:** covering a wide range of industries such as pharmaceuticals, oil extraction, new materials manufacturing and electronic materials production, these companies rely on reliable equipment and solutions to ensure product quality and productivity during production.
- **Laboratories and test centers:** organizations that provide laboratory services and quality testing, requiring accurate laboratory equipment and instruments for sample analysis and testing.
- **Technology Development Companies:** Companies that specialize in the development and application of new technologies and have a high demand for innovative equipment and technical solutions to support their R&D projects and technology validation.

Through clear market positioning and customer groups, we are committed to promoting scientific and technological progress, supporting the innovation and development of our global customers, and continuing to provide high-quality products and services to the market.

Team Introduction

The team at Kintek Solution Ltd is at the heart of the company's success. In order to realize our vision and maintain our leadership position in the field of high-tech research equipment, we are committed to building an exceptional team with the following attributes:

1. Professionalism

- **Technical Expertise:** Our team consists of technical experts and engineers in the field with deep expertise and technical backgrounds to meet complex technical challenges and innovation needs.
- **Industry experience:** We bring together professionals with extensive experience in the fields of research equipment, material science and engineering technology to ensure a precise grasp of market needs and technological trends.

2. Innovative Spirit

- **R&D-driven:** The team encourages innovative thinking and technological exploration, supports employees to participate in R&D projects on cutting-edge technologies, and continuously pushes forward the technological advancement of products and solutions.
- **Flexible Adaptation:** In the face of changing market environment, we have the ability to adapt quickly and flexibly to meet the changing needs of our customers.

3. Collaboration and Communication

- **Cross-sectoral collaboration:** The team maintains close collaboration between various departments, including R&D, production, sales and customer service, to ensure the smooth progress of projects and timely response to customer needs.
- **Efficient Communication:** Emphasize internal communication and information sharing, through efficient communication mechanisms and tools to ensure that all team members are consistent with the project goals and progress.

4. Customer Orientation

- **Customer Service:** Team members are customer-focused and committed to providing quality service and support to ensure that our customers have the best experience in using our products and solutions.

- Customized solutions: the ability to deeply understand the specific needs of customers and provide customized solutions to meet the special requirements of different customers.

5. Professional Training and Development

- Continuous Learning: We provide continuous training and learning opportunities for our team members to ensure that they are always up-to-date with the latest technology and industry knowledge.
- Career Development: We value the career development and growth of our employees, provide clear career paths and promotion opportunities, and motivate our employees to realize their personal goals and career aspirations within the company.

6. Corporate Culture

- Integrity and Responsibility: The team upholds integrity and responsibility, treats work and customers with honesty and fairness, and builds trust and long-term cooperative relationships.
- Unity and Collaboration: Focusing on the spirit of teamwork, the team emphasizes mutual support and joint efforts to achieve the company's goals and promote the overall success of the team.

By building such a highly qualified, innovation-driven and customer-oriented team, we ensure that Kintek Solution Ltd continues to lead in the field of scientific research equipment and provide excellent products and services to our customers worldwide.

At KINTEK, technology fuels our corporate spirit. This dynamic energy awaits you upon joining our team. Expect a distinctive cultural environment where our global business focus opens doors to diverse customs and traditions worldwide. Here, challenging roles promise to propel your career to new heights.

Our exceptional corporate culture sparks innovation, fosters care, and drives continuous progress among individuals and teams. Our team embodies youthfulness, positivity, enthusiasm, and a bold attitude toward challenges. Passionate about our business, our employees ardently contribute to the company's growth.

We seek individuals brave enough to embrace challenges, harbor grand ambitions, and thirst for knowledge. If you're driven by dreams and passion, and aspire to start your

entrepreneurial journey, KINTEK is the platform to actualize your career plans. We don't just offer opportunities; we pave the way for your future.

Join us at KINTEK, where innovation meets opportunity. Let's create a future that's as promising as your aspirations.

Future Plans

Kintek Solution Ltd's future plans are aimed at further strengthening our leadership position in the research equipment sector and driving the company forward in terms of technological innovation, market expansion and customer service. The following are our key future directions:

1. Technology Innovation and R&D

- Cutting-edge technology development: Continue to invest resources in the research and development of cutting-edge technologies, such as artificial intelligence, the Internet of Things and nanotechnology, in order to promote equipment intelligence and automation.
- New Product Lines: Expand existing product lines and develop equipment to meet emerging market needs, especially in the areas of biochemistry, biomedicine and high-performance materials.
- Cooperative R&D: Strengthen cooperation with international research institutes and institutions of higher learning to carry out joint R&D projects to ensure that the technology remains at the global leading level.

2. Market Expansion

- Global Market Expansion: Further expand the global market, especially in emerging markets and developing regions, establish more sales and service networks, and enhance the brand's international influence.
- Industry application: Explore and expand the application fields in other industries, such as new energy, environmental protection technology and intelligent manufacturing, to open up new business growth points.

3. Customer Service Enhancement

- Enhancement of customer support: Establish a more complete customer support system, provide 24/7 technical support and maintenance services, and ensure

the efficient experience of customers in the use of equipment.

- Customized services: Provide more customized services and solutions according to customers' individual needs to enhance customer satisfaction and loyalty.

4. Sustainable Development

- Environmentally friendly technology: Develop and adopt environmentally friendly materials and processes to reduce the environmental impact during the production and use of equipment and promote sustainable development.
- Energy saving and consumption reduction: Optimize the energy efficiency of equipment, reduce energy consumption, improve resource utilization efficiency, and support the development of green technology.

5. Internal optimization

- Intelligent management: Implement intelligent management systems and data analysis tools to improve productivity and management and reduce operating costs.
- Employee Training: Enhance employee training and skills upgrading to build a high-quality team to meet changing market demands and technological challenges.

6. Innovation ecosystem

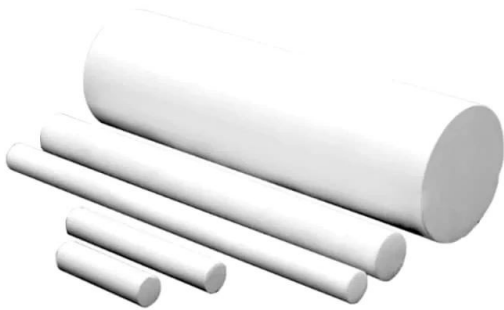
- Establishment of innovation platform: Create innovation platforms and laboratories to support employees and partners in technological innovation and product development.
- Industry Chain Cooperation: Deepen cooperation with the upstream and downstream of the industry chain, integrate resources, and promote the development and implementation of industry technical standards and market norms.

Through these future plans, Kintek Solution Ltd will continue to lead the forefront of science and technology, provide customers with more advanced and reliable products and services, and at the same time, promote the sustainable development of the enterprise and the progress of the industry.



Boron Nitride (Bn) Ceramic Rod

Item Number: KM-D4



Introduction

Boron nitride (BN) rod is the strongest boron nitride crystal form like graphite, which has excellent electrical insulation, chemical stability and dielectric properties.

[Learn More](#)

diameter and length

10-100mm*100-300mm

Boron Nitride (Bn) Ceramic Tube

Item Number: KM-D5



Introduction

Boron nitride (BN) is known for its high thermal stability, excellent electrical insulating properties and lubricating properties.

[Learn More](#)

Hexagonal Boron Nitride (Hbn) Ceramic Ring

Item Number: KM-D6



Introduction

Boron nitride ceramic (BN) rings are commonly used in high temperature applications such as furnace fixtures, heat exchangers and semiconductor processing.

[Learn More](#)

Boron Nitride (Bn) Ceramic Plate

Item Number: KM-D7



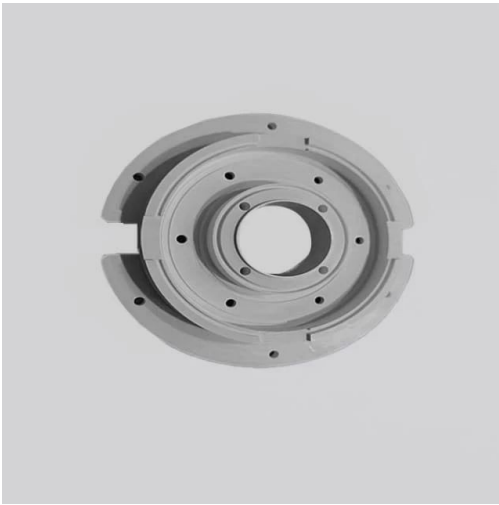
Introduction

Boron nitride (BN) ceramic plates do not use aluminum water to wet, and can provide comprehensive protection for the surface of materials that directly contact molten aluminum, magnesium, zinc alloys and their slag.

[Learn More](#)

Boron Nitride (Bn) Ceramic Custom Parts

Item Number: KM-D8



Introduction

Boron nitride (BN) ceramics can have different shapes, so they can be manufactured to generate high temperature, high pressure, insulation and heat dissipation to avoid neutron radiation.

[Learn More](#)

Boron Nitride (Bn) Ceramics-Conductive Composite

Item Number: KM-D9



Introduction

Due to the characteristics of boron nitride itself, the dielectric constant and dielectric loss are very small, so it is an ideal electrical insulating material.

[Learn More](#)

Alumina (Al₂O₃) Ceramic Crucible For Laboratory Muffle Furnace

Item Number: KM-C01



Introduction

Alumina ceramic crucibles are used in some materials and metal melting tools, and flat-bottomed crucibles are suitable for melting and processing larger batches of materials with better stability and uniformity.

[Learn More](#)

0.9ml(45x8x6mm)	9ml(60x30x10mm)	30ml(60x40x20mm)	185ml(80x80x40mm)	13ml(100x30x10mm)	300ml(100x100x40mm)	510ml(120x120x50mm)
2ml(30x20x10mm)	10ml(50x20x20mm)	35ml(60x30x30mm)	75ml(90x60x20mm)	25ml(100x30x15mm)	750ml(100x100x100mm)	520ml(140x140x38mm)
3ml(25x15x15mm)	10ml(60x30x14mm)	40ml(50x50x25mm)	165ml(90x60x40mm)	35ml(100x30x20mm)	330ml(115x115x35mm)	425ml(150x150x30mm)
3.5ml(20x20x17mm)	16ml(60x30x15mm)	57ml(75x75x15mm)	200ml(90x60x45mm)	59ml(100x30x30mm)	90ml(120x60x20mm)	750ml(150x150x50mm)
4ml(50x20x10mm)	20ml(60x30x20mm)	68ml(65x65x25mm)	170ml(90x90x30mm)	47ml(100x40x20mm)	190ml(120x60x40mm)	1290ml(150x150x80mm)
5ml(30x20x17mm)	25ml(50x40x20mm)	100ml(65x65x35mm)	300ml(90x90x45mm)	110ml(100x50x30mm)	205ml(120x80x30mm)	800ml(160x160x45mm)
7ml(50x20x15mm)	26ml(50x25x35mm)	110ml(70x70x30mm)	22ml(100x20x20mm)	150ml(100x100x25mm)	260ml(120x80x40mm)	1460ml(180x180x60mm)
3.5ml(20x20x17mm)	10ml(60x30x14mm)	25ml(100x30x20mm)	125ml(98x72x28mm)			
5.5ml(45x22x13mm)	15ml(30x30x30mm)	30ml(80x40x17mm)	1800ml(380x135x60mm)			
9ml(60x25x15mm)	15ml(60x30x15mm)	50ml(90x60x17mm)				
10ml(50x28x14mm)	22ml(100x25x15mm)	84ml(120x60x18mm)				
9ml(60x25x15mm)	50ml(85x30x40mm)	125ml(98x72x28mm)	1050ml(150x150x60mm)	1800ml(380x135x60mm)		
15ml(60x30x15mm)	84ml(120x60x18mm)	460ml(160x120x35mm)	1290ml(150x150x80mm)	4000ml(225x225x100mm)		
15ml(30x30x30mm)	95ml(120x100x15mm)	710ml(155x120x50mm)	1800ml(150x100x150mm)			
22ml(100x25x15mm)	100ml(100x50x30mm)	900ml(120x120x100mm)	4400ml(200x150x200mm)			
0.9ml(45x8x6mm)	59ml(100x30x30mm)	260ml(100x100x35mm)	1880ml(340x220x35mm)	6900ml(330x330x80mm)		
3ml(25x15x15mm)	84ml(65x65x30mm)	425ml(150x150x30mm)	3120ml(300x150x90mm)	14L(330x330x160mm)		
5ml(30x20x17mm)	170ml(170x53x30mm)	445ml(100x100x60mm)	3300ml(200x200x100mm)			
16ml(40x30x20mm)	200ml(115x90x30mm)	1090ml(140x140x70mm)	3760ml(300x200x80mm)			
35ml(70x30x30mm)	230ml(115x65x45mm)	1260ml(160x120x85mm)	4000ml(235x165x130mm)			
One big (50x40x20) and two small (30x20x17)	One large (90x65x30) four small (50x20x20)	One large (100x30x20) four small (20x20x17)	One large (115x90x30) five small (75x20x20)	One big (120x60x20) and two small (50x40x20)		

One big (80x80x40) and two small (60x30x30)	One big (90x65x30) and two small (50x40x20)	One large (100x30x20) and three small (30x20x17)	One large (115x115x35) and three small (100x30x20)	One big (120x60x20) and two small (100x20x20)
One Big (90x60x20) Four small (50x20x20)	One Large (90x65x30) and three small (52x25x23)	One Large (100x40x20) and three small (φ28x17)	One big (120x30x15) five small (20x20x17)	One big (120x60x20) five small (50x20x20)
One large (90x60x17) and three small (50x28x1)	One large (100x30x15) and three small (30x20x10)	One Large (100x40x20) and three small (φ30x30)	One large (115x115x35) and three small (100x30x20)	One large (120x60x40) and three small (40x35x25)
One big (90x60x20) and two small (50x40x20)	One big (100x30x20) five small (φ18x26)	One large (100x100x40) nine small (10ml)	One large (120x35x18) seven small (25x15x15)	One large (120x80x30) six small (20ml)
One big (90x60x20) five small (80x10x10)	One large (100x30x20) and four small (φ20x20)	One Large (115x65x45) and four small (50x25x35)	One large (120x60x18) and four small (50x28x14)	One large (120x80x40) six small (15ml)

One large (φ58x60) and seven small (φ16x50)	One large (100x40x20) and three small (φ28x17)	One large (120x60x20) two small (100x20x20 semicircle)
One large (φ70x70) and three small (φ28x58)	One large (100x40x20) and three small (φ30x30)	One large (120x60x40) and three small (40x35x25 semicircle)
One large (100x30x20) and four small (φ20x20)	One large (100x100x40) nine small (10ml regular)	One large (120x80x40) six small (15ml)
One big (100x30x20) five small (φ18x26)	One large (115x65x45) four small (50x25x35)	One large (120x80x30) six small (20ml heightened)

2ml(50x10x10mm)	7ml(50x20x15mm)	68ml(65x65x25mm)	110ml(100x50x30mm)	165ml(90x60x40mm)	1000ml(150x110x80)
2.5ml(70x12x7mm)	15ml(75x20x20mm)	75ml(90x60x20mm)	115ml(65x65x35mm)	170ml(90x90x30mm)	2000ml(160x140x120mm)
4ml(50x20x10mm)	34ml(150x20x20mm)	85ml(120x60x18mm)	120ml(90x65x30mm)	185ml(80x80x40mm)	2600ml(200x200x80mm)
4.5ml (80x10x10mm)	57ml(75x75x15mm)	80ml(120x60x18mm)	135ml(95x68x28mm)	185ml(94x68x38mm)	4800ml(250x250x100mm)
7ml(50x25x10mm)	63ml(150x45x20mm)	90ml(120x60x20mm)	160ml(78x28x107)	520ml(140x140x38mm)	

1.5ml with holes (30x10x9.5mm)	60ml(100x43x26mm)
19ml(100x24x17)	114ml(100x56x35mm)
24ml(73x30x22mm)	175ml(100x84x35mm)
36ml(100x27x27mm)	Other specifications can be customized

0.9ml with lid (45x8x6mm)	26ml with lid (50x25x35mm)	80ml with lid (120x60x18mm)	150ml with lid (100x100x25mm)	330ml with lid (115x115x35mm)	520ml with lid (140x140x38mm)
3ml with lid (25x15x15mm)	40ml with lid (50x50x25mm)	84ml with lid (65x65x30mm)	160ml with lid (78x28x107mm)	370ml with lid (200x100x25mm)	750ml with lid (150x150x50mm)
4ml with lid (50x20x10mm)	59ml with lid (100x30x30mm)	100ml with lid (65x65x35mm)	170ml with lid (90x90x30mm)	425ml with lid (150x150x30mm)	800ml with lid (200x100x50mm)
7ml with lid (50x20x15mm)	60ml with lid (105x105x12mm)	100ml with lid (100x50x30mm)	260ml with lid (100x100x35mm)	445ml with lid (100x100x60mm)	900ml with lid (120x120x100mm)
7ml with lid (50x25x10mm)	68ml with lid (65x65x25mm)	110ml with lid (70x70x30mm)	310ml with lid (105x105x40mm)	510ml with lid (120x120x50mm)	
4ml(50x20x10mm)	26ml(50x25x35mm)	195ml(85x80x40mm)	800ml(200x100x50mm)	3100ml(220x220x80mm)	
5.5ml(100x10x10mm)	30ml(60x40x20mm)	200ml(90x60x45mm)	1100ml(305x90x60mm)	298ml(200x100x30mm)	
10ml(75x18x14mm)	35ml(120x30x15mm)	205ml(120x80x30mm)	1480ml(200x200x50mm)		
16ml(60x30x15mm)	150ml(100x100x25mm)	210ml(85x85x40mm)	2400ml(250x155x80mm)		

20ml(52x25x23mm)	190ml(120x60x40mm)	370ml(200x100x25mm)	2830ml(300x180x70mm)
1050ml with lid (150x150x60mm)	1460ml with lid 180x180x60	2600ml with lid 200x200x80	6900ml with lid (330x330x80mm)
1090ml with lid (140x140x70mm)	1480ml with lid 200x200x50	4400ml with cover (200x150x200mm)	11000ml with cover 330x330x120
1290ml with lid (150x150x80mm)	2830ml with cover 300x180x70	4800ml with cover (250x250x100mm)	14L with cover (330x330x160mm)
4ml with lid 20x20x18mm	3.5ml with lid 20x20x17mm		
800ml(130x120x75mm)	1300ml(130x120x115mm)		

Alumina (Al₂O₃) Crucible With Lid Cylindrical Laboratory Crucible

Item Number: KM-C02



Introduction

Cylindrical Crucibles Cylindrical crucibles are one of the most common crucible shapes, suitable for melting and processing a wide variety of materials, and are easy to handle and clean.

[Learn More](#)

0.4ml(φ10x10mm)	4ml(φ14x45mm)	23ml(φ30x55mm)	74ml(φ45x65mm)	150ml(φ90x30mm)	260ml(φ75x65mm)	470ml(φ80x120mm)	1400ml(φ130x130mm)
0.8ml(φ12x12mm)	6.5ml(φ19x35mm)	25ml(φ28x58mm)	85ml(φ50x60mm)	160ml(φ65x65mm)	275ml(φ60x120mm)	480ml(φ95x95mm)	1600ml(φ140x140mm)
1.5ml(φ20x10mm)	7ml(φ30x20mm)	28ml(φ50x25mm)	89ml(φ60x40mm)	198ml(φ85x50mm)	280ml(φ80x80mm)	560ml(φ130x60mm)	2000ml(φ150x140mm)
3ml (φ12x40mm)	7.5ml(φ28x17mm)	35ml(φ40x40mm)	93ml(φ40x100mm)	220ml(φ60x100mm)	300ml(φ90x65mm)	630ml(φ100x100mm)	2400ml(φ230x80mm)
3ml(φ16x20mm)	9ml(φ30x25mm)	38ml(φ35x51mm)	120ml(φ50x80mm)	220ml(φ70x70mm)	310ml(φ70x100mm)	840ml(φ150x65mm)	2500ml(φ150x180mm)
3ml(φ20x20mm)	12ml(φ30x28mm)	40ml(φ50x30mm)	130ml(φ60x60mm)	220ml(φ100x35mm)	330ml(φ95x60mm)	1000ml(φ115x130mm)	2520ml(φ200x100mm)
3.5ml(φ16x28mm)	13ml(φ30x30mm)	63ml(φ50x45mm)	130ml(φ70x50mm)	250ml(φ85x60mm)	360ml(φ80x100mm)	1100ml(φ100x180mm)	2700ml(φ160x160mm)
3.5ml(φ18x26mm)	21ml(φ35x30mm)	70ml(φ50x50mm)	145ml(φ50x100mm)	250ml(φ95x50mm)	450ml(φ90x90mm)	1350ml(φ125x150mm)	3400ml(φ180x170mm)
5240ml(φ200x200mm)							
0.8mlWith convex cover(φ12x12)	3.5mlWith convex cover(φ16x28)	11mlWith convex cover(φ19x58)	28mlWith buckle cover(φ50x25)	53mlWith convex cover(φ40x70)	100mlwith disc cover(φ58x60)	280mlwith disc cover(φ80x80)	1100mlwith disc cover(φ100x180)
1.5mlWith buckle cover(φ20x10)	3.5mlWith buckle cover(φ16x28)	12mlWith convex cover(φ30x28)	29mlWith convex cover(φ40x35)	61mlWith convex cover(φ40x80)	120mlWith convex cover(φ50x80)	280mlWith buckle cover(φ80x80)	1350mlwith disc cover(φ125x150)
1.5mlWith convex cover(φ20x10)	3.5mlWith convex cover(φ18x26)	12mlWith buckle cover(φ30x28)	35mlWith convex cover(φ40x40)	63mlWith convex cover(φ50x45)	130mlwith disc cover(φ60x60)	300mlWith buckle cover(φ90x65)	1400mlwith disc cover(φ130x130)
3mlWith convex cover(φ12x40)	4mlWith convex cover(φ14x45)	13mlWith convex cover(φ30x30)	38mlWith convex cover(φ35x50)	63mlWith buckle cover(φ50x45)	130mlwith disc cover(φ70x50)	450mlwith disc cover(φ90x90)	1600mlwith disc cover(φ140x140)
2mlWith convex cover(φ16x20)	6.5mlWith convex cover(φ19x35)	13mlWith buckle cover(φ30x30)	38mlWith buckle cover(φ35x50)	70mlWith convex cover(φ50x50)	150mlwith disc cover(φ90x30)	450mlWith buckle cover(φ90x90)	2000mlwith disc cover(φ150x140)
2mlWith buckle cover(φ16x20)	7mlWith convex cover(φ30x20)	15mlWith convex cover(φ47x13)	40mlWith convex cover(φ50x30)	70mlWith buckle cover(φ50x50)	150mlWith buckle cover(φ90x30)	560mlwith disc cover(φ130x60)	2400mlwith disc cover(φ230x80)
3mlWith buckle cover(φ20x18)	7.5mlWith convex cover(φ28x17)	23mlWith convex cover(φ30x55)	50mlWith buckle cover(φ35x70)	73mlWith convex cover(φ35x100)	160mlwith disc cover(φ65x65)	630mlwith disc cover(φ100x100)	2500mlwith disc cover(φ150x180)
3mlWith convex cover(φ20x18)	8mlWith buckle cover(φ25x25)	23mlWith buckle cover(φ30x55)	50mlWith convex cover(φ40x60)	85mlWith convex cover(φ50x60)	163mlwith disc cover(φ90x35)	840mlwith disc cover(φ150x65)	2700mlwith disc cover(φ160x160)
3mlWith convex cover(φ20x20)	9mlWith convex cover(φ20x50)	25mlWith convex cover(φ28x58)	52mlWith buckle cover(φ30x100)	85mlWith buckle cover(φ50x60)	220mlwith disc cover(φ60x100)	950mlwith disc cover(φ120x120)	3400mlwith disc cover(φ180x170)
3mlWith buckle cover(φ20x20)	9mlWith convex cover(φ30x25)	28mlWith convex cover(φ50x25)	52mlWith convex cover(φ30x100)	95mlwith disc cover(φ95x20)	260mlwith disc cover(φ70x70)	1000mlwith disc cover(φ115x130)	

0.4ml(10x10)	1.5ml(13x24)	3ml(20x18)	5ml(15x70)	8ml(25x25)	15ml(30x28)	39ml(35x58)
0.7ml(20x4)	2ml(30x5)	3ml(35x6)	6ml(16x50)	9ml(20x50)	15ml(47x13)	50ml(35x70)
1ml(10x50)	2.5ml(10x60)	4ml(12x150)	6.5ml(19x35)	11ml(19x58)	18ml(23x60)	50ml(40x60)
1.2ml(11x20)	3ml(12x40)	4ml(14x45)	8ml(16x56)	12ml(55x8)	29ml(40x35)	

One large (φ58x60) and seven small (φ16x50)	One large (100x40x20) and three small (φ28x17)	One large (120x60x20) two small (100x20x20 semicircle)
One large (φ70x70) and three small (φ28x58)	One large (100x40x20) and three small (φ30x30)	One large (120x60x40) three small (40x35x25 semicircle)
One large (100x30x20) and four small (φ20x20)	One large (100x100x40) nine small (10ml)	One large (120x80x30) six small (20ml)
One big (100x30x20) five small (φ18x26)	One large (115x65x45) four small (50x25x35)	One large (120x80x40) six small (15ml)

52ml(30x100)	80ml(56x50)	119ml(40x135)	180ml(50x120)	270ml(90x60)
53ml(40x70)	95ml(95x20)	127ml(45x110)	185ml(59x87)	300ml(100x50)
61ml(40x80)	100ml(58x60)	140ml(115x20)	230ml(100x40)	375ml(70x120)
73ml(35x100)	105ml(75x27)	163ml(90x35)	250ml(70x90)	420ml(70x145)

2mlwith outer buckle cap(φ16x20)	6mlwith inner convex cap(φ16x50)	220ml with disc cover (φ100x35)	300ml with disc cover (φ100x50)	610ml with disc cover (φ80x155)	900ml with disc cover (φ115x110)
2mlwith inner convex cap(φ16x20)	8mlwith buckle cap(φ16x56)	250ml with disc cover (φ85x60)	330ml with disc cover (φ95x60)	610mlwith buckle cap(φ80x155)	1050ml with disc cover (φ150x80)
3.5mlwith buckle cap(φ16x28)	8mlwith inner convex cap(φ16x56)	250mlwith buckle cap(φ85x60)	360ml with disc cover (φ80x100)	790ml with disc cover (φ80x200)	1100ml with disc cover (φ100x180)
3.5mlwith inner convex cap(φ16x28)	50ml with disc cover (φ40x60)	260ml with disc cover (φ75x65)	360mlwith buckle cap(φ80x100)	790mlwith buckle cap(φ80x200)	
5mlwith inner convex cap(φ15x70)	130ml with disc cover (φ70x50)	270ml with disc cover (φ90x60)	420ml with disc cover (φ70x145)	860ml with disc cover (φ140x70)	
6mlwith buckle cap(φ16x50)	163ml with disc cover (φ90x35)	270mlwith buckle cap(φ90x60)	560ml with disc cover (φ115x70)	900mlwith disc cover(φ110x120)	
0.7ml with disc cap (φ20x4)	4ml with inner convex cap (φ14x45)	8ml with buckle cap (φ25x25)	1240ml with disc cover (φ125x125)	2500ml with disc cover (φ150x180)	
2ml with disc cap (φ30x5)	6.5ml with inner convex cap (φ19x35)	11ml with inner convex cap (φ19x58)	2700ml with disc cover (φ160x160)	2600ml with disc cover (φ130x245)	
3ml with disc cap (φ35x6)	7.5ml with inner convex cap (φ28x17)	15ml with buckle cap (φ30x30)	1290ml with disc cover (φ115x155)	3800ml with disc cover (φ160x240)	
3ml with outer buckle cap (φ35x6)	8ml with inner convex cap (φ25x25)	25ml with inner convex cap (φ28x58)	1460ml with disc cover (φ140x120)		
3ml with disc cap (φ20x18)	74ml with disc cover (φ45x65)	450ml with buckle cover (φ90x90)	630ml with disc cover (φ100x100)	1000ml with disc cover (φ115x130)	2400ml with inner convex cap (φ230x80)
21ml with inner convex cap (φ35x30)	95ml with disc cover (φ95x20)	470ml with disc cover (φ80x120)	840ml with disc cover (φ50x65)	1350ml with disc cover (φ125x150)	2600ml with disc cover (φ145x195)

21ml with buckle cap (Φ35x30)	100ml with disc cover (Φ60x55)	470ml with buckle cover (q80x120)	900ml with disc cover (Φ80x235)	1400ml with disc cover (Φ130x130)	3400ml with disc cover (Φ180x170)
39ml with inner convex cap (Φ35x58)	127ml with disc cover (Φ45x110)	480ml with disc cover (Φ95x95)	900ml with buckle cover (Φ80x235)	1600ml with disc cover (Φ140x140)	
39ml with buckle cap (Φ35x58)	450ml with disc cover (Φ90x90)	560ml with disc cover (Φ130x60)	950ml with disc cover (Φ120x120)	2000ml with disc cover (Φ150x140)	
73ml with buckle cap (Φ35x100)	100ml with disc cover (Φ58x60)	130ml with disc cover (Φ65x50)	160ml with disc cover (Φ65x65)	220ml with disc cover (Φ60x100)	275ml with disc cover (Φ60x120)
74ml with buckle cap (Φ45x65)	119ml with inner convex cap (Φ40x135)	140ml with disc cover (Φ115x20)	180ml with inner convex cap (Φ50x120)	230ml with disc cover (Φ100x40)	280ml with buckle cover (Φ80x80)
80ml with disc cover (Φ56x50)	120ml with buckle cap (Φ50x80)	145ml with inner convex cap (Φ50x100)	180ml with buckle cover (Φ50x120)	250ml with disc cover (Φ70x90)	300ml with buckle cover (Φ90x65)
85ml with buckle cap (Φ50x60)	127ml with buckle cover (Φ45x110)	145ml with buckle cap (Φ50x100)	185ml with disc cover (Φ59x87)	250ml with disc cover (Φ95x50)	310ml with disc cover (Φ70x100)
93ml with disc cap (Φ40x100)	130ml with disc cover (Φ60x60)	150ml with buckle cover (Φ90x30)	198ml with buckle cover (Φ85x50)	260ml with disc cover (Φ70x70)	375ml with disc cover (Φ70x120)
560ml(115x70)	900ml(110x120)	1100ml(107x160)	2600ml(130x245)		
610ml(80x155)	900ml(115x110)	1240ml(125x125)	2600ml(145x195)		
790ml(80x200)	950ml(120x120)	1290ml(115x155)	3800ml(160x240)		
860ml(140x70)	1000ml(104x155)	1460ml(140x120)	5200ml(185x240)		
900ml(80x235)	1050ml(150x80)	2000ml(150x140)			
2520ml(Φ200x100)	5200ml(Φ185x240)	5240ml(Φ200x200)			
50ml (Φ40x60)	330ml (Φ95x60)	790ml (Φ80x200)	1240ml (Φ125x125)	3800ml (Φ160x240)	
163ml (Φ90x35)	360ml (Φ80x100)	860ml (Φ140x70)	1290ml (Φ115x155)	5200ml (Φ185x240)	
220ml (Φ100x35)	420ml (Φ70x145)	900ml (Φ110x120)	1460ml (Φ140x120)	5240ml (Φ200x200)	
250ml (Φ85x60)	470ml (Φ80x120)	900ml (Φ115x110)	2500ml(Φ150x180)		
270ml (Φ90x60)	560ml (Φ115x70)	1050ml (Φ150x80)	2520ml (Φ200x100)		
300ml (Φ100x50)	610ml (Φ80x155)	1100ml (Φ100x180)	2600ml(Φ130x245)		
Customized Φ56x50mm without cover	Customized Φ56x50mm with cover				

Alumina (Al₂O₃) Ceramic Crucible Semicircle Boat With Lid

Item Number: KM-C03



Introduction

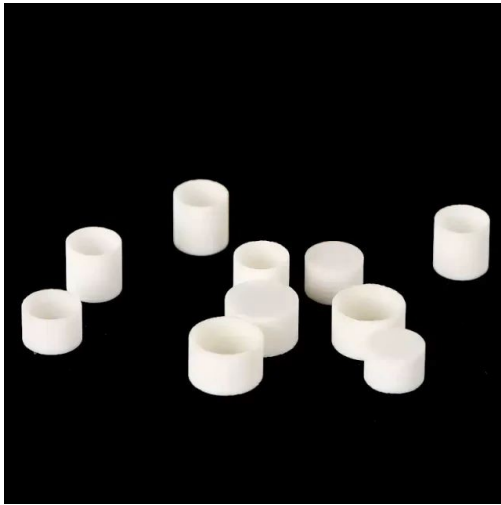
Crucibles are containers widely used for melting and processing various materials, and semicircular boat-shaped crucibles are suitable for special smelting and processing requirements. Their types and uses vary by material and shape.

[Learn More](#)

5ml(40x25x17mm)	17ml(55x35x22mm)	42ml(100x40x25mm)	97ml(250x40x19mm)	9ml with lid (100x20x15mm)
7ml(100x20x20mm)	18ml(80x30x16mm)	48ml(100x45x22mm)	110ml(100x65x30mm)	20ml with lid (100x30x20mm)
9ml(65x25x16mm)	20ml(100x30x20mm)	58ml(60x55x40mm)	1025ml(200x130x60mm)	30ml with lid (100x35x18mm)
9ml(100x20x15mm)	30ml(100x35x18mm)	60ml(150x40x20mm)	700ml(150x150x60mm)	40ml with lid (100x40x20mm)
9.5ml(38x34x19mm)	40ml(60x54x24mm)	65ml(100x50x30mm)	800ml(180x120x45mm)	42ml with lid (100x40x25mm)
12ml(40x35x25mm)	40ml(100x40x20mm)	85ml(115x55x28mm)	7ml with lid (100x20x20mm)	65ml with lid (100x50x30mm)
700ml with lid (150x150x60mm)				

Alumina Crucibles (Al₂O₃) Covered Thermal Analysis / Tga / Dta

Item Number: KM-C04



Introduction

TGA/DTA thermal analysis vessels are made of aluminum oxide (corundum or aluminum oxide). It can withstand high temperature and is suitable for analyzing materials that require high temperature testing.

[Learn More](#)

Fine grinding	Alumina content: 99.5%	Alumina content is high in purity, Relatively low alumina content.	Color: pure white	High-purity alumina is slightly yellowed after firing	Fine grinding outer circle	Precise size, fine processing, no impurity particles	
Regular	Alumina content: 95%	less interference to the experiment	Color: yellowish	95% alumina is pure white in color after firing	Unground outer circle	Regular for thermal analysis, not finely ground	
φ 5x2.5 regular models	φ 10x10 Regular	φ 6.5x4 fine grinding	φ 5x5 conventional	φ 5mm cover fine grinding	φ 6.8x4 regular model	φ 5.88x12.77 fine grinding	φ 6x4 fine grinding
φ 6x4.5 regular models	φ 5x3 fine grinding	φ 12x12 Regular	φ 6.5x8 fine grinding	φ 5x8 Regular	φ 6mm lid fine grinding	φ 7x4 conventional	φ 9x4 Regular
φ 9x4 fine grinding	φ 6.5x4 regular model	φ 5x4 fine grinding	φ 5mm lid regular type	φ 6.5x10 fine grinding	φ 5.3x3.5 fine grinding	φ 6.8mm lid fine grinding	
φ 5x2.5 fine grinding	φ 10x10 fine grinding	φ 6.5x8 regular model	φ 5x5 fine grinding	φ 6mm cover regular type	φ 6.8x4 fine grinding	φ 6x4 conventional	
φ 6x4.5 fine grinding	φ 5x4 conventional	φ 12x12 fine grinding	φ 6.5x10 regular models	φ 5x8 fine grinding	φ 6.8mm cover regular type	φ 7x4 fine grinding	

Alumina Ceramic Sagger - Fine Corundum

Item Number: KM-C05



Introduction

Alumina sagger products have the characteristics of high temperature resistance, good thermal shock stability, small expansion coefficient, anti-stripping, and good anti-powdering performance.

[Learn More](#)

fine striped sagger	100x100x13mm95	105x105x12mm99
fine striped sagger	103x103x22mm	118x100x19mm
fine striped sagger	120x120x40mm	195x100x32mm
Fine corundum burning table	100x100x15mm95 aluminum oxide - notched	105x105x12mm99 aluminum oxide - notched
Fine corundum burning table	250*250mm	

Alumina (Al₂O₃) Furnace Tube - High Temperature

Item Number: KM-C06



Introduction

High temperature alumina furnace tube combines the advantages of high hardness of alumina, good chemical inertness and steel, and has excellent wear resistance, thermal shock resistance and mechanical shock resistance.

[Learn More](#)

outer 4mm inner 2mm (1 meter)	outer 12mm inner 8mm (1 meter)	outer 25mm inner 19mm (1 meter)	outer 45mm inner 36mm (1 meter)	outer 70mm inner 60mm (1 meter)
outer 5mm inner 3mm (1 meter)	outside 16mm inside 11mm (1 meter)	outside 30mm inside 24mm (1 meter)	outside 50mm inside 40mm (1 meter)	outer 80mm inner 70mm (1 meter)
outer 6mm inner 4mm (1 meter)	outer 18mm inner 13mm (1 meter)	outer 32mm inner 26mm (1 meter)	outer 55mm inner 45mm (1 meter)	outside 90mm inside 80mm (1 meter)
outer 8mm inner 5mm (1 meter)	outside 20mm inside 15mm (1 meter)	outer 35mm inner 28mm (1 meter)	outside 60mm inside 50mm (1 meter)	90mm outside 100mm inside (1 meter)
outside 10mm inside 6mm (1 meter)	outer 22mm inner 16mm (1 meter)	outer 40mm inner 32mm (1 meter)	outer 65mm inner 55mm (1 meter)	

Aluminum Oxide (Al₂O₃) Protective Tube - High Temperature

Item Number: KM-C07



Introduction

Alumina oxide protective tube, also known as high temperature resistant corundum tube or thermocouple protection tube, is a ceramic tube mainly made of alumina (aluminum oxide).

[Learn More](#)

Φ1*Φ0.3mm (double holes)	Φ3*Φ0.7mm (double holes)	Φ2*0.4mm (four holes)
Φ1.5*Φ0.5mm (double hole)	Φ5*Φ1.5mm (double holes)	Φ4*Φ1mm (four holes)
Φ2*Φ0.5mm (double hole)	Φ5.5*Φ1.5mm (double holes)	Φ5*Φ1.2mm (four holes)
Φ2.5*Φ0.7mm (double holes)	Φ8*Φ2mm (double holes)	Φ8*Φ2mm (four holes)

Φ1*0.3mm	Φ2*0.3mm	Φ3*0.7mm	Φ4*1.5mm	Φ5.5*1.5mm	Φ8*2mm
Φ1.2*0.3mm	Φ2*0.5mm	Φ3.5*0.8mm	Φ4.5*1.2mm	Φ6*1.8mm	Φ8*2.4mm
Φ1.4*0.4mm	Φ2*0.6mm	Φ3.5*1mm	Φ5*1.2mm	Φ6.5*1.8mm	Φ10*2.7mm
Φ1.5*0.4mm	Φ2.5*0.7mm	Φ4*1.2mm	Φ5*1.5mm	Φ6.5*2mm	Φ7*2mm

Alumina (Al₂O₃) Plate-High Temperature And Wear-Resistant Insulating

Item Number: KM-C08



Introduction

High temperature wear-resistant insulating alumina plate has excellent insulation performance and high temperature resistance.

[Learn More](#)

10x10x1mm	130x32x10mm	140x85x10mm	150x150x8mm
100x100x4mm	133x133x6mm	150x100x10mm	150x150x10mm
100x100x10mm	135x30x10mm	150x140x8mm	160x160x8mm
115x70x10mm	135x135x5mm	150x150x6mm	250x250x10mm

Alumina (Al₂O₃) Ceramic Rod-Insulated

Item Number: KM-C09



Introduction

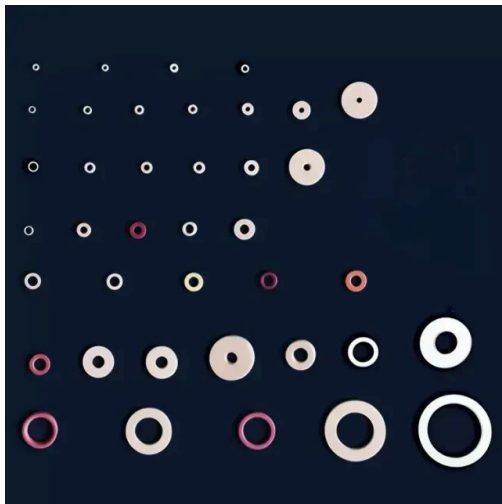
Insulated alumina rod is a fine ceramic material. Alumina rods have excellent electrical insulating properties, high chemical resistance and low thermal expansion.

[Learn More](#)

0.4*100mm	0.9*100mm	3.2*100mm	6*100mm	13*114mm	18*86mm	40*100mm	8*300mm	24*400mm
0.5*100mm	1*100mm	3.5*100mm	7*100mm	14*114mm	18*100mm	50*100mm	10*300mm	30*400mm
0.6*100mm	2*100mm	4*100mm	8*100mm	15*100mm	20*100mm	60*100mm	12*300mm	
0.8*100mm	2*150mm	4.5*90mm	9*100mm	16*100mm	25*100mm	4*300mm	15*300mm	
0.7*100mm	2.5*100mm	4.75*100mm	10*100mm	15*100mm	30*100mm	5*300mm	16*300mm	
0.8*100mm	3*100mm	5*100mm	12*100mm	16*100mm	35*100mm	6*300mm	20*300mm	

Aluminium Oxide (Al₂O₃) Ceramic Washer - Wear-Resistant

Item Number: KM-C10



Introduction

Alumina wear-resistant ceramic washer are used for heat dissipation, which can replace aluminum heat sinks, with high temperature resistance and high thermal conductivity.

[Learn More](#)

Inner 1 outer 7 thick 1.6	4 inside, 8 outside, 4 thick	Inner 6.5 outer 15.5 thick 10	Inner 8 outer 18 thick 8.5	Inner 9.2 outer 14.5 thick 3.5	Inner 13 outer 21 thick 5
Inner 1.6 outer 6 thick 1.5	Inner 4 outer 10 thick 2/3/5	Inner 7 outer 10 thick 3	Inner 8 outer 20 thick 2.5/4	Inside 9.2 outside 14.5 thick 4	Inner 14.3 outer 21.2 thick 2
Inside 2 outside 4 thick 1	Inner 5 outer 10 thick 2.5	Inner 7 outer 14 thick 2.7	Inner 8.2 outer 25 thick 3/5	Inside 9.5 outside 18 thick 3	Inner 14 outer 42 thick 5.5
Inner 2 outer 16 thick 4.5	Inner 5 outer 10 thick 2/3	Inner 7 outer 25 thick 5	Inside 8.5 outside 16 thick 3	Inside 9 outside 31 thick 10	Inside 15.5 outside 27 thick 3.5
Inside 3 outside 6 thick 1	Inner 5 outer 17.8 thick 10	Inner 7.2 outer 15.5 thick 2.1/2.4	Inner 8.6 outer 14 thick 1/1.5	Inner 10 outer 25 thick 3/5	Inner 16 outer 23 thick 0.8
Inner 3 outer 6 thick 1.5	Inner 5.5 outer 14 thick 3/5	Inner 8 outer 12 thick 4	Inner 8.6 outer 14 thick 2/3/4	Inside 10 outside 27 thick 0.6	Inner 16 outer 23 thick 2.5/4
Inner 3 outer 6 thick 2/3/5	Inside 5.5 outside 14 thick 3/10	Inner 8.1 outer 13 thick 3	Inner 8.6 outer 14 thick 5	Inside 10 outside 36.5 thick 5	Inner 16 outer 23 thick 5/7.7
Inner 3 outer 10 thick 1.5/2/3/5	Inner 6 outer 12 thick 2	Inner 8 outer 13 thick 4	Inside 9 outside 31 thick 5	Inner 10 outer 50 thick 5	Inner 16.5 outer 37 thick 5/10
Inner 3.2 outer 7.8 thick 3.8	Inner 6 outer 12 thick 3/4/5	Inner 8 outer 15 thick 1	Inner 9.2 outer 14.5 thick 2	Inner 10.5 outer 18 thick 2	Inner 17 outer 40 thick 3.5
Inner 4 outer 6 thick 1	Inside 6.5 outside 10 thick 4	Inner 8 outer 17 thick 8.5	Inner 9.2 outer 14.5 thick 2.5	Inner 12.5 outer 25.5 thick 3	Inner 23 outer 39 thick 3.5/5/10
Inner 4 outer 7 thick 2.5	Inner 6.5 outer 14 thick 2/4	Inner 8 outer 18 thick 2	Inner 9.2 outer 14.5 thick 3	Inner 12.5 outer 25.5 thick 5	Inner 31 outer 50.5 thick 3.5

Alumina Ceramic Screw - High Quality Insulation And High Temperature Resistance

Item Number: KM-C011



Introduction

Alumina ceramic screws are fastening components made of 99.5% alumina, ideal for extreme applications requiring excellent thermal resistance, electrical insulation and chemical resistance.

[Learn More](#)

M16	External hexagon	100*9.2*24.2	7.*9.2*24.2	40*9.2*24.2	
M14	External hexagon	80*10*22	50*7.6*21.9	40*9.9*21	
M12	External hexagon	75*8.1*18.8	50*10.3*18.3	25*10.3*18.4	15*10*21.2
	Inner hexagon	50*10.5*17.2	35/25*10.4*17.1	15*12.2*18.1	14*12.2*18
M10	External hexagon	70*7*16.8	35*6.6*16.6		
	Inner hexagon	50*9*14.8	35*9.1*14.8		
M8	Inner hexagon	70*5.6*14	50*4.5*11.7	35*5.3*12.9	25*5.3*12.9
	Inner hexagon	50*7.6*12.3	35*7.9*12.3		
	Flat head inner hexagon	30*.*13.8			
	"+"Type	20*.*14.2			
M6	External hexagon	55*5.2*9.7	40*4.3*9.6		
	Inner hexagon	40*5.8*9.8	25*5.9*10	15*5.9*10	
	"+"Type	40*.*12			
	Outer hexagon " _ " type	25*3.9*9.8			
	Round head " _ "type with hole	20*4.8*10			
	Inner hexagon	15*.*9.8			
M5	External hexagon	25*3.5*8	20/15*3.6*8	10/12*3.6*7.6	5*3.6*8
	Inner hexagon	35*4.7*7.8	25/20*4.9*8.1	15/12*4.9*8.1	10/5*4.9*8.1
	Round head "+"type with hole	25*.*8.6	20*.*8.5	12*.*8.5	
	Round head Inner hexagon	25*2.*9.3	12*2.8*8.6		
	Round head " _ " type	10*3.4*7.9			
	"+"Type	10*.*8.9			
	Round head " _ " type with hole	6/15*3*10			
M4	External hexagon	20*3.2*6.8	15*3.3*6.8	10*3.2*6.8	
	Inner hexagon	25*4*7	20*4.1*6.9	15*4.1*6.8	10*3.2*6.8

	Inner hexagon	25*.*8.5			
	"+" Type	12*.*8.4			
	Round head "___" type	8*2.9*7	5*2.1*9.3		
	Round head "+" type with hole	3*4.5*8.9			
M3.5	"+" Type	9*.*5.3			
M3	External hexagon	10*3*5.5	30*3*5.4		
	Inner hexagon	30*3*5.4	20/25*3*5.4	15/10*3*5.4	8*3*5.4
	"+" Type	15*.*5.2	6*.*5.6		
	Round head "+" type	6.5*2.7*5.5			
M2.5	"+" Type	9*.*4.5	6*.*3.9		
M2	Flat head "___" type half teeth	22*1.4*3.8			
	Inner hexagon	14*1.9*3.8			
	Flat head "___" type	10*1.4*3.8			
	"+" thread	8*1.6*3.5			
	Round head "+" type	8*1.5*3.5			
	External hexagon	6*1.6*3.8			
	"+" Type	6*.*4.2			

Alumina (Al₂O₃) Ceramic Positioning Pin - Straight Bevel

Item Number: KM-C012



Introduction

Alumina ceramic positioning pin has the characteristics of high hardness, wear resistance and high temperature resistance.

[Learn More](#)

model	small head diameter	middle diameter	Bevel Diameter	length
M4	3.1mm	4.8mm	9.7mm	22mm
M5	4mm	5.5mm	9.6mm	22mm
M6	4.7mm	6.7mm	9.5mm	26mm
M8	6.3mm	8.5mm	12mm	26mm
M9	6.3mm	9.7mm	12.9mm	28.9mm
M10	8.3mm	10.7mm	13.6mm	24.5mm
M12	9.5mm	12.7mm	14.8mm	26.5mm
M13	10mm	13.7mm	16.8mm	32.9mm

model	small head diameter	middle diameter	Bevel Diameter	length
M4	3mm	4.7mm	7.7mm	24.3mm
M5	4mm	5.5mm	9.6mm	22mm
M6	4.8mm	6.7mm	9.9mm	26mm
M8	6.2mm	8.8mm	11.9mm	25.7mm
M10	8.3mm	10.6mm	14.2mm	26.7mm
M12	9.1mm	12.6mm	14.7mm	30.5mm
M14	12.5mm	14.8mm	15.7mm	28.7mm

Aluminum Oxide (Al₂O₃) Ceramics Heat Sink - Insulation

Item Number: KM-C013



Introduction

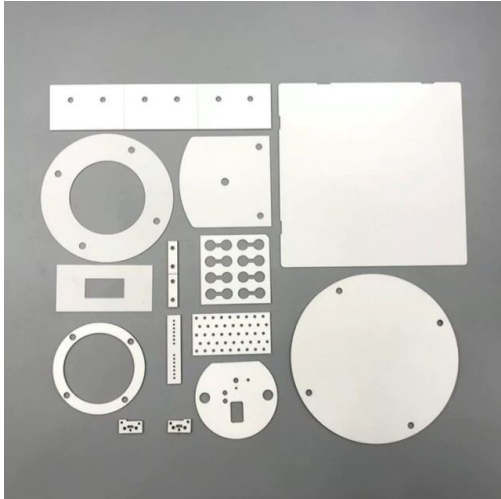
The hole structure of the ceramic heat sink increases the heat dissipation area in contact with the air, which greatly enhances the heat dissipation effect, and the heat dissipation effect is better than that of super copper and aluminum.

[Learn More](#)

1.7*3mm	10*4mm	16*1mm	20*20mm	29.5*1mm	60*1mm	100*8mm
3*3mm	10*5mm	16*4mm	20.5*1mm	30.5*1mm	57.8*6mm	107*3mm
4*2.3mm	10.5*2mm	16*5mm	22*1mm	32*5mm	70*1mm	150*5mm
6*6mm	10.5*10.5mm	17*1mm	23.5*2.5mm	35*1mm	74*1mm	200*5mm
7*3.3mm	12*1mm	18*0.63mm	25*0.5mm	40*1mm	80*1mm	
8*5mm	12*5mm	19*0.8mm	26*4mm	45*0.5mm	90*1mm	
9.5*1.3mm	14*1mm	20*1mm	26*5mm	51*1mm	100*1mm	
10*1mm	16*0.5mm	20*10mm	28*6.5mm	50*5mm	100*2mm	

Alumina Zirconia Special-Shaped Parts Processing Custom-Made Ceramic Plates

Item Number: KM-C014



Introduction

Alumina ceramics have good electrical conductivity, mechanical strength and high temperature resistance, while zirconia ceramics are known for their high strength and high toughness and are widely used.

[Learn More](#)

Boron Nitride (Bn) Ceramic Parts

Item Number: KM-P01



Introduction

Boron nitride ((BN) is a compound with high melting point, high hardness, high thermal conductivity and high electrical resistivity. Its crystal structure is similar to graphene and harder than diamond.

[Learn More](#)

Zirconia Ceramic Plate - Yttria Stabilized Precision Machined

Item Number: KM-G02



Introduction

Yttrium-stabilized zirconia has the characteristics of high hardness and high temperature resistance, and has become an important material in the field of refractories and special ceramics.

[Learn More](#)

Zirconia Ceramic Rod - Stabilized Yttrium Precision Machining

Item Number: KM-G01



Introduction

Zirconia ceramic rods are prepared by isostatic pressing, and a uniform, dense and smooth ceramic layer and transition layer are formed at high temperature and high speed.

[Learn More](#)

0.2*100mm	0.7*100mm	1.2*100mm	2.5*100mm	8*100mm	15*115mm
0.3*100mm	0.8*100mm	1.5*100mm	3*100mm	10*100mm	16*115mm
0.4*100mm	0.9*100mm	1.6*100mm	4*100mm	12*100mm	18*115mm
0.5*100mm	1*100mm	1.8*100mm	5*100mm	13*115mm	20*115mm
0.6*100mm	1.1*100mm	2*100mm	6*100mm	14*115mm	22*200mm

Zirconia Ceramic Ball - Precision Machining

Item Number: KM-G03



Introduction

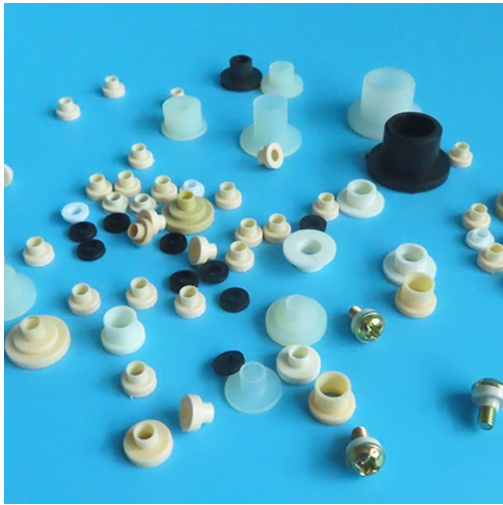
zirconia ceramic ball have the characteristics of high strength, high hardness, PPM wear level, high fracture toughness, good wear resistance, and high specific gravity.

[Learn More](#)

1mm	2.778mm	4.763mm	6.747mm	9.0mm	12.7mm	16.668mm	25.0mm	40mm
1.2mm	3.0mm	5.0mm	7.0mm	9.525mm	13.494mm	17.4625mm	25.4mm	50mm
1.5mm	3.175mm	5.556mm	7.144mm	10.0mm	14mm	18.256mm	28mm	
1.588mm	3.5mm	5.953mm	7.938mm	10.318mm	14.288mm	19.05mm	28.575mm	
2.0mm	3.969mm	6.0mm	8.0mm	11.1125mm	15.0mm	20.0mm	30.0mm	
2.381mm	4.0mm	6.35mm	8.5mm	11.509mm	15.875mm	20.638mm	35mm	
2.5mm	4.5mm	6.5mm	8.731mm	12.0mm	16.0mm	22.225mm	38.1mm	

Zirconia Ceramic Gasket - Insulating

Item Number: KM-G04



Introduction

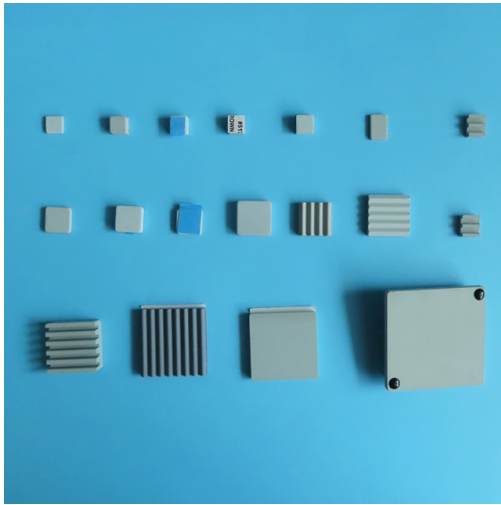
Zirconia insulating ceramic gasket has high melting point, high resistivity, low thermal expansion coefficient and other properties, making it an important high temperature resistant material, ceramic insulating material and ceramic sunscreen material.

[Learn More](#)

5*5	13*97	148*100	22*43	Disc Diameter:
40*40	43*43	60*60	77*77	19/20/21
52*52	50*80	120*100	120*120	25/26/32
10*10	110*110	150*150	100*100	65/70/38
101*101	140*70	20*20	25*50	115/160
130*130	15*10	70*60	80*75	
42*42	56*56	50*50	125*125	
55*55	112*112	158*80	196*168	

Silicon Carbide (Sic) Ceramic Sheet Flat / Corrugated Heat Sink

Item Number: KM-DT01



Introduction

Silicon carbide (sic) ceramic heat sink not only does not generate electromagnetic waves, but also can isolate electromagnetic waves and absorb part of electromagnetic waves.

[Learn More](#)

25*25*3mm	30*30*5mm	40*40*4mm	50*50*5mm
25*25*5mm	30*30*5mm	40*40*5mm	60*60*5mm
25*25*5mm	30*30*8mm	40*40*5mm	60*60*8mm
25*25*8mm	30*30*10mm	40*40*7mm	
25*25*10mm	35*35*10mm	40*40*8mm	
30*30*2.5mm	40*40*3mm	50*50*5mm	

Silicon Carbide (Sic) Ceramic Sheet Wear-Resistant

Item Number: KM-DG02



Introduction

Silicon carbide (sic) ceramic sheet is composed of high-purity silicon carbide and ultra-fine powder, which is formed by vibration molding and high-temperature sintering.

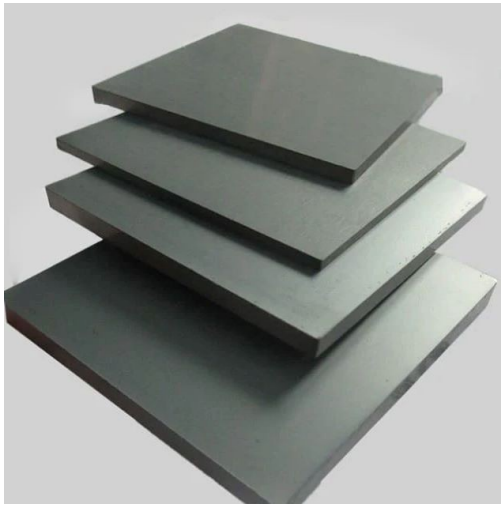
[Learn More](#)

Round 15*3mm	40*40*1mm	50*50*4/5/6mm	100*100*5mm	150*150*5mm
5*5*1mm	40*40*2mm	50*50*8/10mm	100*100*7mm	15*15*1mm (one side polished)
10*10*4mm	50*50*1mm	50*50*14mm	100*100*10mm	50*50*1mm (one side polished)
20*20*3mm	50*50*2mm	100*100*3mm	100*100*15mm	
20*20*5mm	50*50*3mm	100*100*4mm	100*100*20mm	

Project	Unit	Vacuum Sintering SiC	Reaction Bonded SiC
Density	g/cc	3.12	3.05-3.08
Surface roughness	um	0.6	0.6-0.8
Hardness	Hs	115	110
Apparent porosity	%	0.2	0.3
Compressive strength	MPa	2500	2500
Flexural strength	MPa	380	350
Free silicon content	%	1	10
Purity (Silicon Carbide Content)	%	≥99	≥90
Elastic modulus	GPa	410	400
Thermal conductivity	Cal/cm.s.°C	0.3	0.32
Coefficient of thermal expansion	i/°C	4.2×10 ⁻⁶	4×10 ⁻⁶
Operating temperature	°C	1400	1300

Silicon Carbide (Sic) Ceramic Plate

Item Number: KM-DG03



Introduction

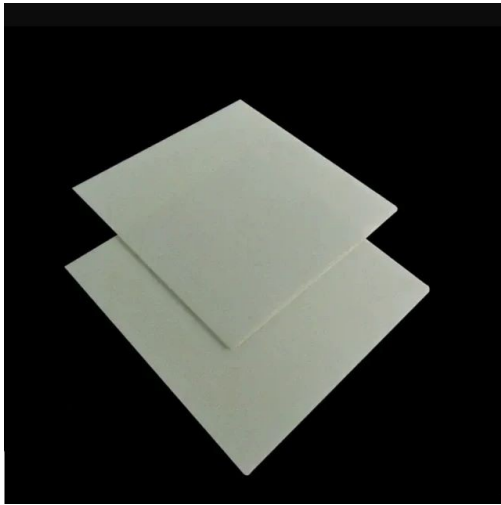
Silicon nitride (sic) ceramic is an inorganic material ceramic that does not shrink during sintering. It is a high-strength, low-density, high-temperature-resistant covalent bond compound.

[Learn More](#)

25*50*5/6mm	50*50*4/5mm	100*100*4mm	100*100*12mm	150*150*6mm
25*50*10/8mm	50*50*6/8mm	100*100*5mm	100*100*15mm	150*150*8mm
50*50*1mm	50*50*10mm	100*100*6mm	100*100*16mm	150*150*10mm
50*50*2mm	100*100*2mm	100*100*8mm	100*100*30mm	
50*50*3mm	100*100*3mm	100*100*10mm	150*150*5mm	

Silicon Nitride (Sin) Ceramic Sheet Precision Machining Ceramic

Item Number: KM-DG04



Introduction

Silicon nitride plate is a commonly used ceramic material in the metallurgical industry due to its uniform performance at high temperatures.

[Learn More](#)

10*10*0.35mm

20*20*0.35mm

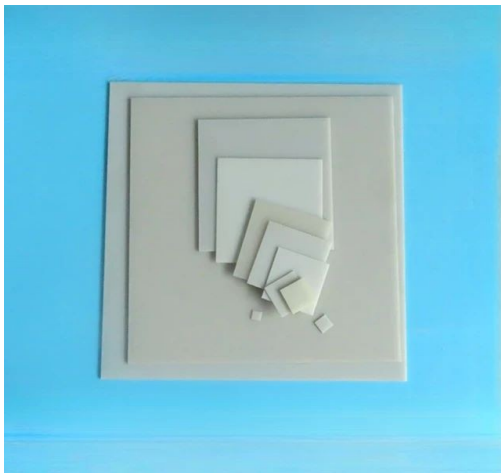
140*190*0.32mm

114*114*0.35mm

114*114*0.75mm

Aluminum Nitride (AlN) Ceramic Sheet

Item Number: KM-DG05



Introduction

Aluminum nitride (AlN) has the characteristics of good compatibility with silicon. It is not only used as a sintering aid or reinforcing phase for structural ceramics, but its performance far exceeds that of alumina.

[Learn More](#)

Product number	Product regular size (mm)	
Porous aluminum nitride ceramic sheet	14*19*1	14*19*1
	20*25*1	20*25*1
	22*28*1	22*28*1
	29*42*1	17*22*0.6
	Round140.385	
Non-porous aluminum nitride ceramic sheet	6*30*1	114*114*1
	20*25*1	127*127*1
	3.6*3.6*0.385	139*190.5*1
	10*10*1	152.4*152.4*0.6
	30*30*1	152.4*152.4*1
	40*40*1	165*165*1
	50*50*1	25*98*0.635
	1016*101.60.38	50*50*0.5
	101.6*101.6*0.635	Round31*1.2
	114*114*0.385	Round26*1
	1143*114.30.635	Round72.6*0.6
	Round15*1.5	Round45*1
	Round26*1	Round45*1.5
	Round30*1	Round50*1
	Round35*1	Round50*2
	Round40*1	Round60*1

Alumina Granulated Powder/High Purity Alumina Powder

Item Number: KM-P02



Introduction

Ordinary alumina granulated powder is alumina particles prepared by traditional processes, with a wide range of applications and good market adaptability. This material is known for its high purity, excellent thermal stability and chemical stability, and is suitable for a variety of high-temperature and conventional applications.

[Learn More](#)

	Al ₂ O ₃ (%)	Embryo density (g/cm ³)	Particle size distribution (mesh)	Bulk density (g/cm ³)	Firing temperature (°C)	Hot holding time (h)	Shrinkage (%)	Porcelain density (g/cm ³)	Porcelain color
PZ-99	≥99	2.0-2.2		1.0-1.1	1650		18±0.5	≥3.85	Slightly yellow
PZ-95A	≥95	2.3-2.4	60-200 mesh	1.1-1.2	1630	2.5-3	15±0.5	≥3.73	white
			Center diameter 140				15±0.5	≥3.68	Pale
PZ-95	≥95	2.3-2.4		1.1-1.2	1630		16±0.5	≥3.65	white

Serial number	Product model	Scope of application
1	DZ-99.5	Semiconductor components, 5G communication supporting ceramics, etc.
2	DZ-99A	Ceramic plunger, bushing, photovoltaic, etc.
3	DZ-93	Electric vacuum ceramic shell and other metallized products
4	PZ-95A	Water valve plate, spark plug, etc.
5	PZ-95	Fuse, relay supporting ceramics, etc.

Low Temperature Alumina Granulation Powder

Item Number: KM-P03



Introduction

Low temperature alumina granulation powder is a kind of alumina particles produced by a special low temperature process, designed to meet the needs of temperature sensitive applications. This material has excellent low temperature performance and good processing characteristics, suitable for a variety of industries that require low temperature processing and treatment.

[Learn More](#)

	Al ₂ O ₃ (%)	Embryo density (g/cm ³)	Particle size distribution (mesh)	Bulk density (g/cm ³)	Firing temperature (°C)	Hot holding time (h)	Shrinkage (%)	Porcelain density (g/cm ³)	Porcelain color
DZ-99.5	≥99.5	2.3-2.4	60-200 mesh Center diameter 140	1.05-1.15	1650	2.5-3	16±0.5	≥3.92	Slightly yellow
DZ-99A	≥99	2.3-2.4		1.05-1.15	1630		16±0.5	≥3.90	Slightly yellow
DZ-95C	≥99	2.25-2.35		1.05-1.15	1630		16±0.5	≥3.88	Slightly yellow
DZ-97	≥97	2.25-2.35		1.1-1.2	1600		16±0.5	≥3.75	white
DZ-95	≥95	2.3-2.4		1.15-1.25	1560		14±0.5	≥3.68	white
DZ-93	≥93	2.25-2.35		1.1-1.2	1560		13±0.5	≥3.65	white

Serial number	Product model	Scope of application
1	DZ-99.5	Semiconductor components, 5G communication supporting ceramics, etc.
2	DZ-99A	Ceramic plunger, bushing, photovoltaic, etc.
3	DZ-93	Electric vacuum ceramic shell and other metallized products
4	PZ-95A	Water valve plate, spark plug, etc.
5	PZ-95	Fuse, relay supporting ceramics, etc.

Ceramic Head Tweezers/Pointed Tip/Elbow Tip/Zirconia Ceramic Tip

Item Number: KM-C015



Introduction

Zirconia ceramic tweezers are a high-precision tool made of advanced ceramic materials, especially suitable for operating environments that require high precision and corrosion resistance. This type of tweezers not only has excellent physical properties, but is also popular in the medical and laboratory fields because of its biocompatibility.

[Learn More](#)



Kintek Solution

Head Quarter: No.89 Science Avenue, High-Tech Zone,
Zhengzhou, China

