



KINTEK SOLUTION

## H Type Electrolytic Cell Catalog

Contact us for more catalogs of [Sample Preparation](#), [Thermal Equipment](#), [Lab Consumables & Materials](#), [Bio-Chem Equipment](#), etc...

# KINTEK SOLUTION

## COMPANY PROFILE

### >>> About Us

Kintek Solution Ltd is one technology orientated organization, team members are devoted to probing the most efficient and reliable technology and innovations in the scientific researching equipment, fields like biochemical reacting, new materials researching, heat treatment, vacuum creating, refrigerating, as well as pharmaceutical and petroleum extracting equipment.

In the past 20 years, we earned rich experiences in this researching equipment field, we are capable to supply both the equipment and solution according to customer's needs and realities, we have also developed lots of customer tailored equipment according to a specific working purpose, and we have lots of successful projects in many universities and institutes from different countries, like Asia, Europe, North and South America, Australia and New Zealand, Middle East, and Africa.

Profession, quick response, hard working, and sincerity is a remarkable label of our team members working attitude, which earn us a sound reputation among our clients.

We are here and ready to service our clients from different countries and regions, and share the most efficient and reliable technology together!



## H Type Electrolytic Cell - H Type / Triple

Item Number: ELCH



### Introduction

Experience versatile electrochemical performance with our H-type Electrolytic Cell. Choose from membrane or non-membrane sealing, 2-3 hybrid configurations. Learn more now.

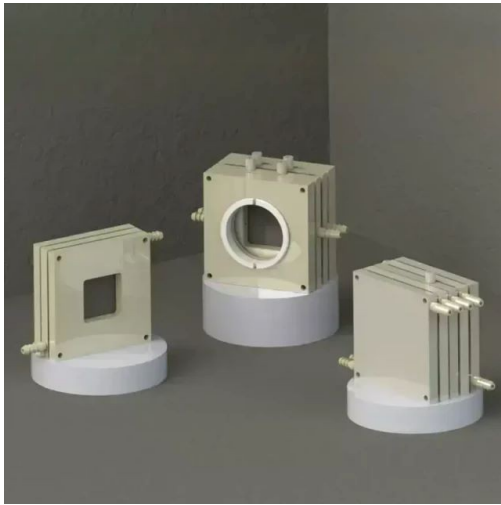
[Learn More](#)

|                              |                                                                      |
|------------------------------|----------------------------------------------------------------------|
| Specification                | 30ml~ 500ml                                                          |
| Applicable temperature range | 0 ~ 60°C                                                             |
| Applicable membrane area     | 15mm (can be customized)                                             |
| Material                     | Boron glass + PTFE                                                   |
| Electrolytic cell punching   | Three electrode holes (6mm) Four gas (3mm) can be customized opening |

|                              |                                                                   |
|------------------------------|-------------------------------------------------------------------|
| Specification                | 30ml~ 500ml                                                       |
| Applicable temperature range | 0 ~ 60°C                                                          |
| Applicable membrane area     | 0.5cm <sup>2</sup> /1cm <sup>2</sup>                              |
| Material                     | Boron glass + PTFE                                                |
| Electrolytic cell punching   | Three electrode holes (6mm) Six air holes (3mm) can be customized |

## Gas Diffusion Electrolysis Cell Liquid Flow Reaction Cell

Item Number: ELCG



### Introduction

Looking for a high-quality gas diffusion electrolysis cell? Our liquid flow reaction cell boasts exceptional corrosion resistance and complete specifications, with customizable options available to suit your needs. Contact us today!

[Learn More](#)

|               |                                                                  |
|---------------|------------------------------------------------------------------|
| Airway type   | snake-shaped airway / back-shaped airway / special-shaped custom |
| Cell material | optional PTFE / PEEK / PP / plexiglass / nylon                   |

## Water Bath Electrolytic Cell - H-Type Double-Layer Optical

Item Number: ELCHD



### Introduction

Double-layer H-type optical water bath electrolytic cells, with excellent corrosion resistance and a wide range of specifications available. Customization options are also available.

[Learn More](#)

|                              |                                                                                 |
|------------------------------|---------------------------------------------------------------------------------|
| Specification                | 10ml ~ 1000ml                                                                   |
| Applicable temperature range | 0 ~ 60°C                                                                        |
| Sealed form                  | Thread + Apron                                                                  |
| Material                     | Boron glass + PTFE                                                              |
| Electrolytic cell hole       | Three electrode holes (6mm), two air holes (3mm), custom openings are available |

# Optical Water Bath Electrolytic Cell

Item Number: ELCWO



## Introduction

Upgrade your electrolytic experiments with our Optical Water Bath. With controllable temperature and excellent corrosion resistance, it's customizable for your specific needs. Discover our complete specifications today.

[Learn More](#)

|                              |                                                                     |
|------------------------------|---------------------------------------------------------------------|
| Specifications               | 50ml ~ 250ml                                                        |
| Applicable temperature range | 0 ~ 60°C                                                            |
| Sealing form                 | Thread + Apron                                                      |
| Material                     | boron glass + PTFE                                                  |
| Electrolytic cell opening    | three electrode holes (6mm), two air holes (3mm), can be customized |
| Specifications               | 50ml ~ 250ml                                                        |
| Applicable temperature range | 0 ~ 60°C                                                            |
| Material                     | boron glass + PTFE                                                  |
| Electrolytic cell opening    | three electrode holes (6mm), can be customized                      |



## Kintek Solution

Head Quarter: No.89 Science Avenue, High-Tech Zone,  
Zhengzhou, China

Hongkong Office: 300 Lockhart Road, Wan Chai,  
Hongkong

Canada Office: Boulevard Graham, Mont-Royal, QC, H3P  
2C7, Canada

